



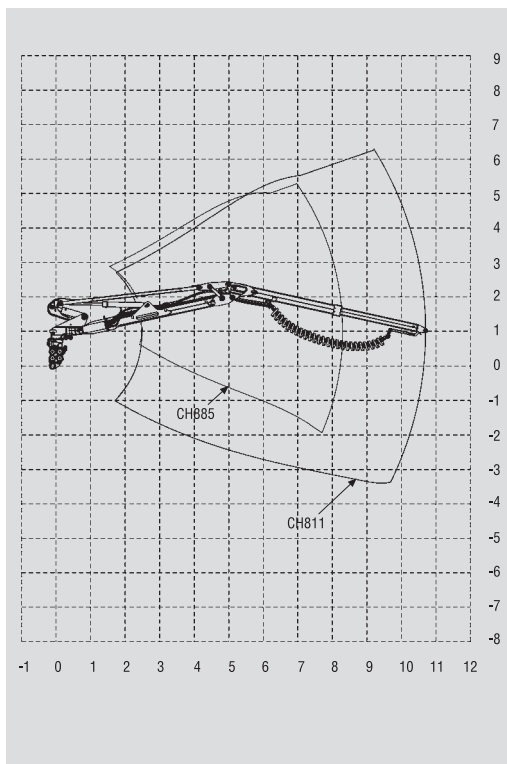
WARATAH

CH8

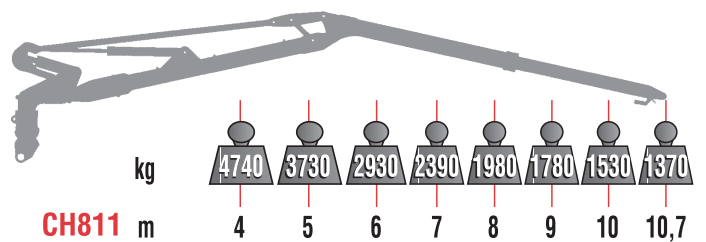
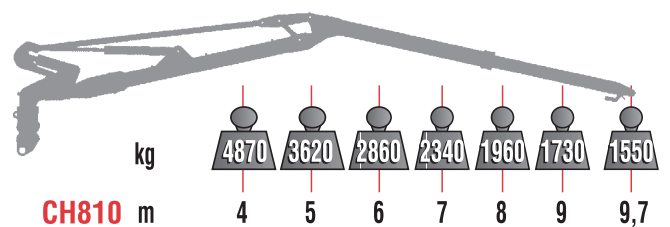
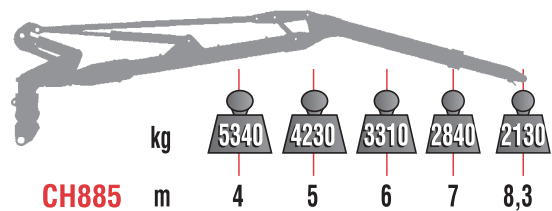
HARVESTER CRANE



OUTREACH DIAGRAM:



CAPACITY DIAGRAM (allowed loads):



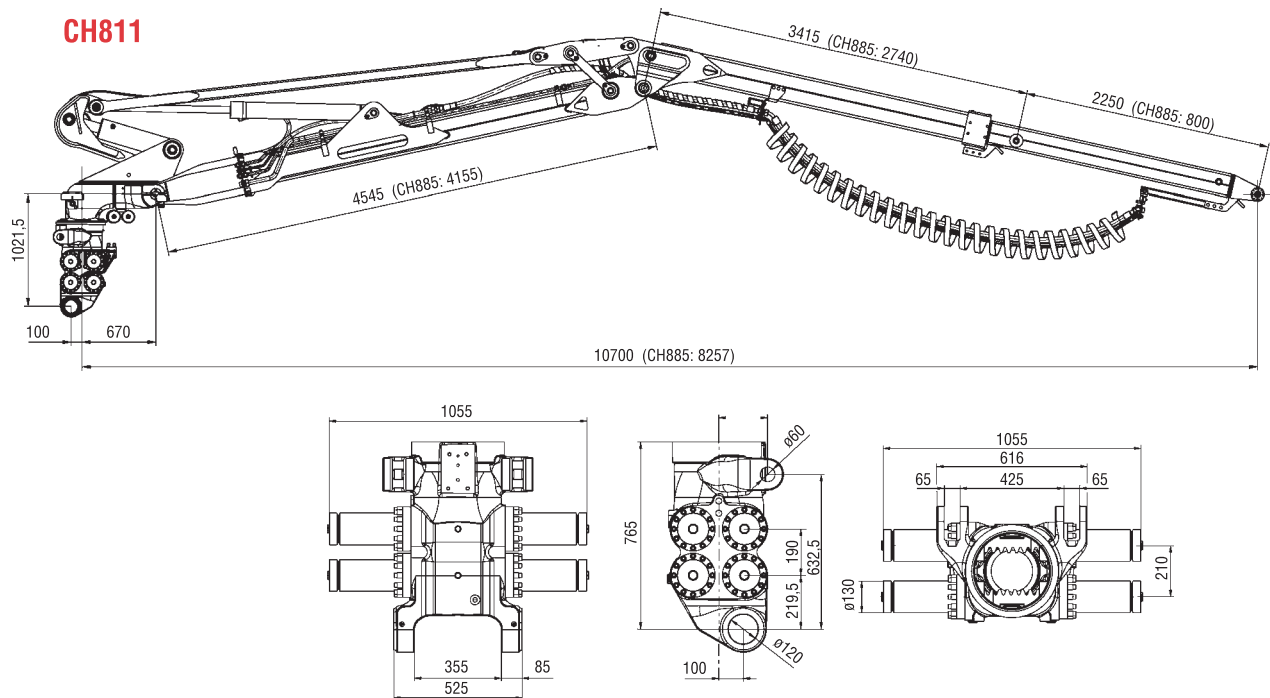
Actual lifting capacity depends on which link, rotator and harvester head is used.

TECHNICAL DATA:

		CH885	CH810	CH811
Lifting moment, gross	kNm	210	210	210
Max. load	kg	2130	1550	1370
Outreach *)	mm	8550	10000	11000
Stroke of boom extension	mm	800	1250	2250
Slewing torque, gross	kNm	60	60	60
Slewing angle	°	220	220	220
Weight without oil, incl. hoses for harvester head	kg	2850	3250	3300
Pump recommendation				
Max. working pressure	MPa	25	25	25
Oil flow	l/min	300	300	300
Power input	kW	150	150	150

*) Outreach is with the Waratah harvester head.
Actual length of the crane is 300 mm shorter.

MAIN DIMENSIONS:



8/06

We reserve the right to amend these specifications at any time without notice. The only warranty provided by Waratah Forestry Attachments is its written Limited Warranty, which accompanies and applies to each product sold by Waratah Forestry Attachments. Waratah disclaims responsibility or liability for any economic loss or personal injury that may occur as a result of any changes to a Waratah product that have not been approved by Waratah

as a result of the non-approved inclusion on any Waratah product of any equipment not of Waratah's design or manufacture. Not all products are available in all markets. The manufacturer reserves the right to make changes or add improvements at any time without incurring any obligation to make such changes on machines manufactured previously.