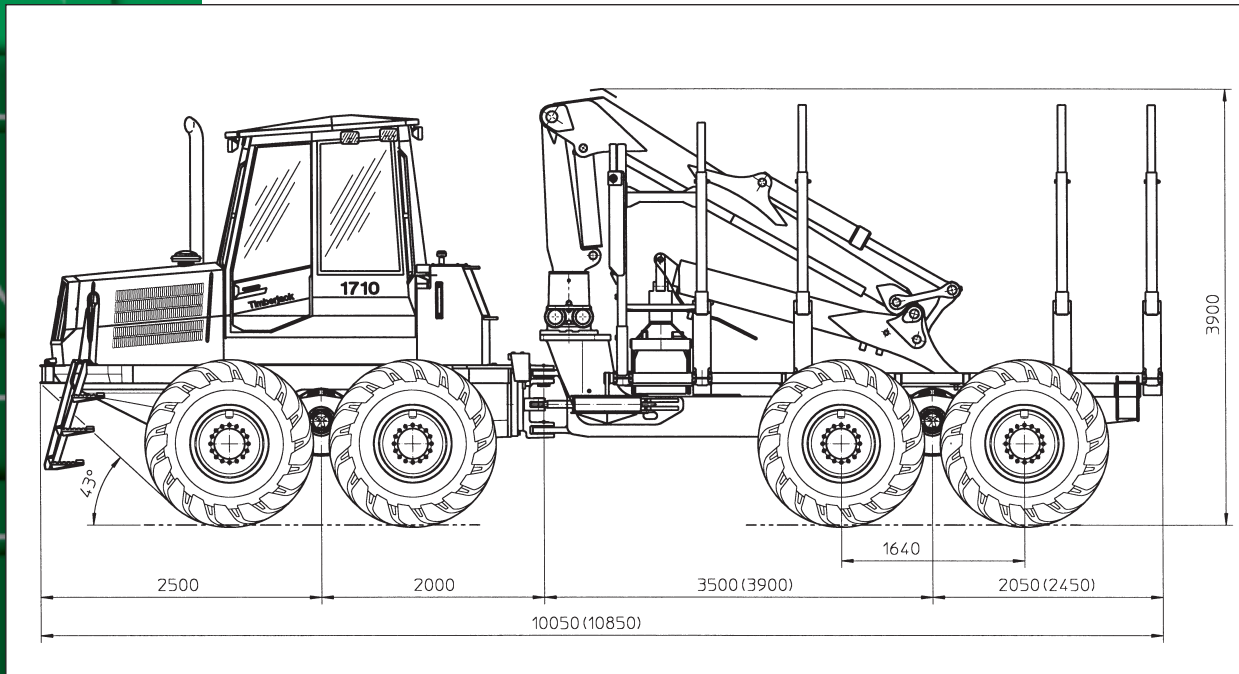


TIMBERJACK

Timberjack 1710 Forwarder



Technical Data

Dimensions

Length	10 050 mm
optional	10 850 mm
Width	2 990 mm
	with 650x26.5-tires
	3030 mm
	with 750x26.5-tires
Transportation height	3 900 mm
Ground clearance	680 mm 6-wh
	730 mm 8-wh
Wheelbase	5 500 mm

Weight

These details vary depending on equipment specified. Contact your dealer for details.

6-wh	16 500-18 000 kg
8-wh	18 000-19 500 kg

Load Area

Length	4 680 mm
optional	5 480 mm
Width	2 800 mm
option with short frame	3160 mm
Max. cross section	5,3 m ²
option with short frame	6,2 m ²
Max. load rating	17 000 kg

Engine

Perkins 1306-8TI water-cooled turbo-charged 6-cylinder diesel engine.

Output	157 kW(210 hp)/2200 rpm.
Max. torque	847 Nm /1600 rpm.
Fuel tank volume	180 l

Transmission

Timberjack TMC (Total Machine Control) system. Hydrostatic-mechanical power transmission. Range gear with low and high range. Inching, smooth start through pedal without dropping engine revolutions. Travel speed max. 23 km/h
Max. tractive force 200 kN

Axles

Bogie axles with portal type bogie beams including patented balancing units. Similar axles at front and rear on 8-wh. Power transmission through gears in bogie booms. Hydraulically operated mechanical differential locks front and rear. Disconnection of rear axle drive with high range.

Steering

Articulated frame steering with two hydraulic steering cylinders. Steering angle $\pm 42^\circ$. Proportional steering with electric joystick.

Tires

6-wh	front 23.1-34 and rear 650-26.5
optional	front 700-34 and rear 750-26.5
8-wh	650-26.5
optional	750-26.5



Brakes

Service and working brakes are hydraulically actuated, oil immersed multiple disc brakes. Identical in both axles. Spring actuated parking and emergency brakes in front and rear bogie.

Hydraulic system

Timberjack TMC system. Load-sensing hydraulic system with power control. Working pressure 21.5 Mpa. Pump capacity: working hydraulics 310 l/min, power train 290 l/min. Hydraulic oil reservoir volume 200 l.

Electrical system

Voltage 24 V
Batteries 2x140 Ah
Alternator 140 A/24 V
Working lights 10x140 W Twin Power

Loader

F111 F85
Lift moment gross 151 kNm
Reach 8,5 m, optional 7,2 m

Cab

Spacious, light and comfortable cab giving the operator excellent vision. Efficient heating and air-conditioning. Thanks to the unique cab mounting, the noise and vibration levels are low. Noise level according to ISO 5131:1993 below 72 dB(A). The cab can be raised and shifted to the side for easy service access. Safety tested according ISO, ROPS, FOPS, OPS-standards. Radio/cassette recorder. Connection for cellular phone. Tinted polycarbonate windows.

Standard equipment

Tools. Operators Manual. Spare Parts Catalogue. Fire extinguisher. Travel distance gauge and constant engine revolution regulator on TMC. Stability brake. Hydraulic steps. Mineral hydraulic oil. Cushioned seat.

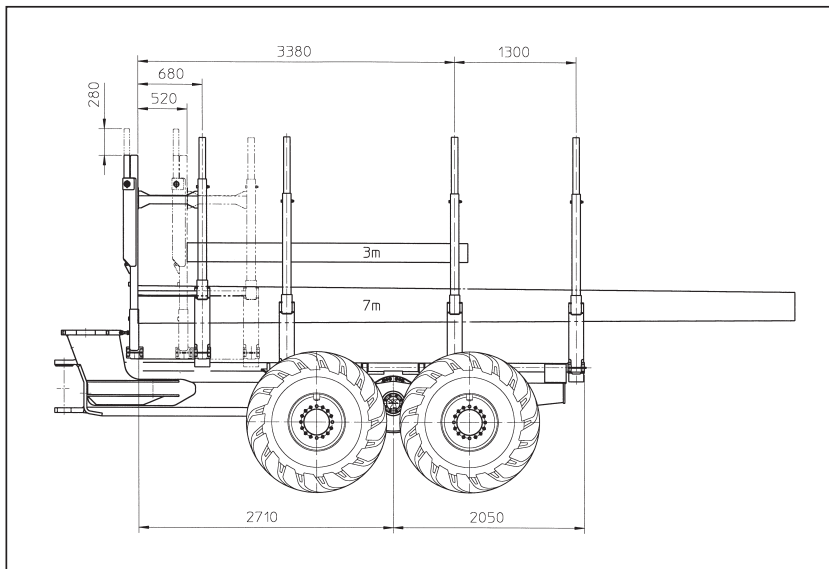
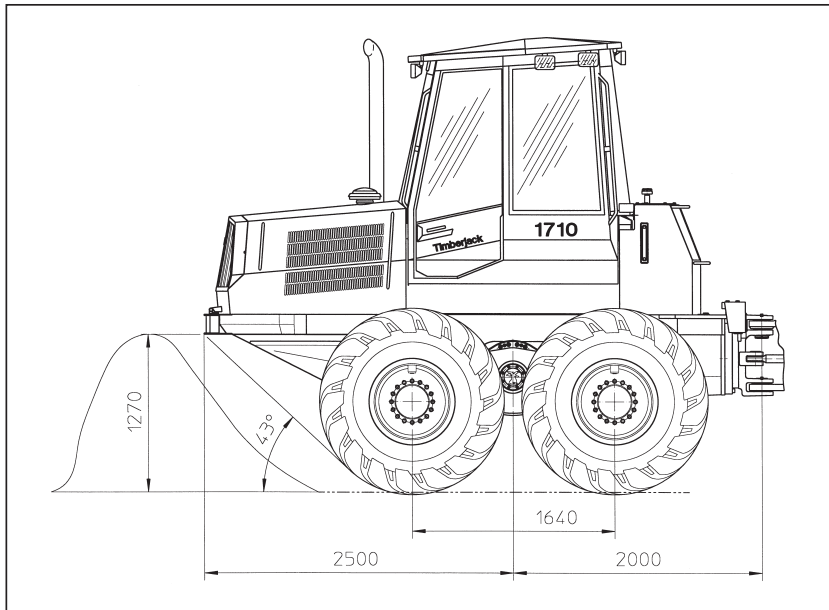
Note!

Standard and optional equipment may vary. For details, contact your local dealer.

Optional equipment

Vacuum pump for hydraulics. Tracks. Chains. Spare wheel. Dozer blade. Portable electrical refill pump for fuel. Working lights 2x70 W on loader. Working lights 2x70 W on cabin lower corner. Hydraulically transferrable headboard.

The manufacturer reserves the right to make changes or add improvements without incurring any obligation to make such changes on machines manufactured previously.



Timberjack

Doing more

Timberjack Group • A Member of Rauma Corporation
Timberjack AB
P.O.Box 502, S-195 25 Märsta, Sweden
Tel.: +46 8 591 252 00, Fax: +46 8 591 112 61
www.timberjack.com