

Technical Data

Application

Middle class 6 or 8 wheel forwarder. Most suitable for thinnings and regenerative cuttings. Load rating 11000 kg.

Dimensions

Length 8910/9710 mm
 Width 2680 mm (600 tires)
 2860 mm (700 tires)

Transportation height 3700 mm

Ground clearance 605 mm 6 and 8 wheel
 Wheelbase 5000/5400 mm

Weight

6-wheel 12600-13900 kg
 depending on options,
 8-wheel 14300-15700 kg
 depending on options.

Engine

Perkins 1006-60T water-cooled turbocharged 6-cylinder diesel engine.

Output 113 kW/2200 rpm
 Max. torque 620 Nm/1500 rpm
 Fuel tank 150 l

Transmission

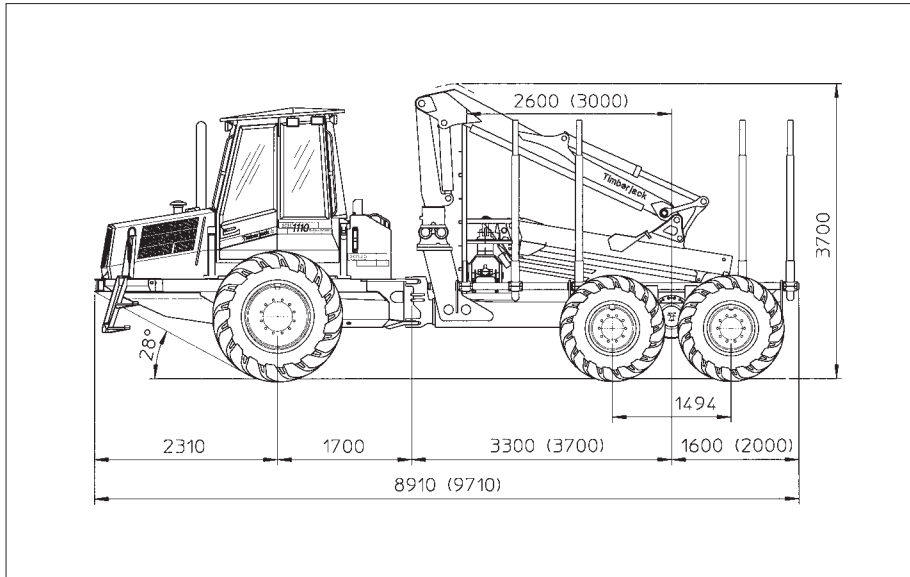
Timberjack TMC® (Total Machine Control) system. Hydrostatic-mechanical power transmission. Range gear with low and high range. Inching, smooth start through pedal without dropping engine revolutions. Travel speed max. 23 km/h. Max. tractive force 150 kN.

Axles

Bogie axles with portal type bogie beams including patented balancing units. Similar axles at front and rear on 8-wheel. Hub planetary gear boxes in 6-wheel front axle. Power transmission through gears in bogie beams. Hydraulically operated mechanical differential locks front and rear. Disconnection of rear axle drive with high range.

Steering

Articulated frame steering with two hydraulic steering cylinders. Steering angle $\pm 44^\circ$. Proportional steering with electric joystick.



Tires

6-wh front 700-34 and rear 700-26.5, optional front 600-34 and rear 600-26.5. 8-wh 700-26.5, optional 600-26.5.

Brakes

Service and working brakes are hydraulically actuated, oil immersed multiple disc brakes. Identical in both axles. Spring actuated parking and emergency brakes in front and rear axles.

Hydraulic system

Timberjack TMC® system. Load-sensing hydraulic system with power control. Working pressure 21.5 MPa. Pump capacity: working hydraulics 131 cc, power train 100 cc. Hydraulic oil reservoir volume 140 l.

Electrical system

Voltage 24 V
 Batteries 2x115 Ah
 Alternator 130 A/28 V
 Working lights 8x140 Twin Power

Cab

Spacious, light and comfortable cab giving the operator excellent vision in all directions. Efficient heating and air-conditioning. Thanks the unique mounting of the cab, the noise level and vibrations are exceptionally low. Noise level according ISO 5131:1993 below 70 dB(A). The cab can be raised and shifted to the side for easy service access. Safety tested according ISO-standards. Radio/cassette recorder. Connection for cellular phone. Tinted polycarbonate windows. Mechanically or air adjusted seat.

Notice!

Standard and optional equipment may vary. For details, contact your local dealer.

Standard equipment

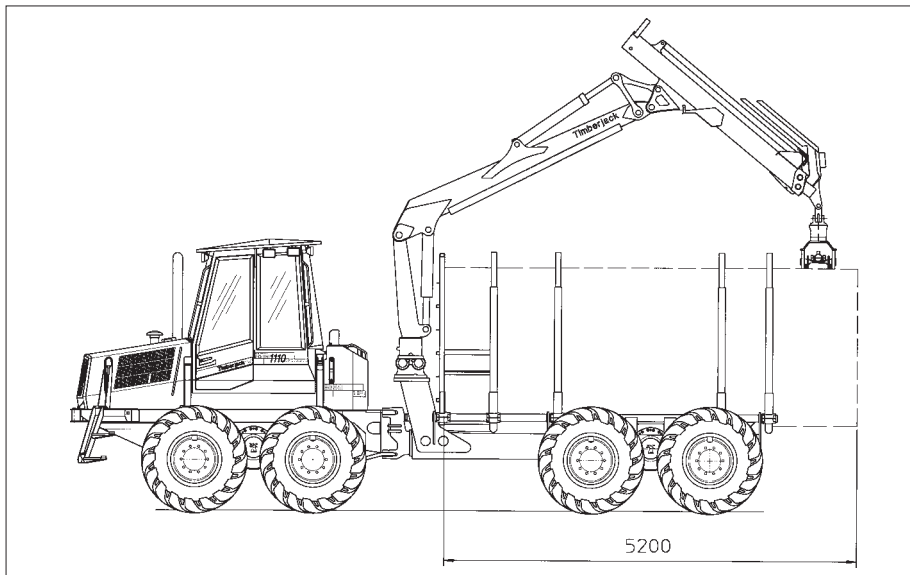
Tools. Operators Manual. Spare Parts Catalogue. Fire extinguisher. Travel distance gauge on TMC®. Constant engine revolution regulator on TMC®. Stability brake. Mechanical refill pump for hydraulic oil. Air cushioned seat.

Optional equipment

Engine and cab preheater. Hydraulic steps. Headboard transfer. Electrical refill pump for hydraulics. Extra fire extinguisher. Tracks. Chains. Exhaust pipe support. Spare wheel. Dozer blade. Sun blinds. Biodegradable hydraulic oil. Preparedness for clambunk. Engine hood protection. Steel wire branch protection. Working lights 2 x 70W on loader. Working lights 2 x 70W on cabin lower corner and 1 x 70 W rear light. Portable electrical refill pump for fuel. Vacuum pump for hydraulics. Fire Extinguishing System, night automatic.

Ground Pressures (in kPa)

6W Tyres	Front		Rear		
	Empty	Loaded	Empty	Loaded 11 t	Loaded 11 t (tracks)
600	71	71	37	100	63
700	62	62	32	90	55



Ground Pressures (in kPa)

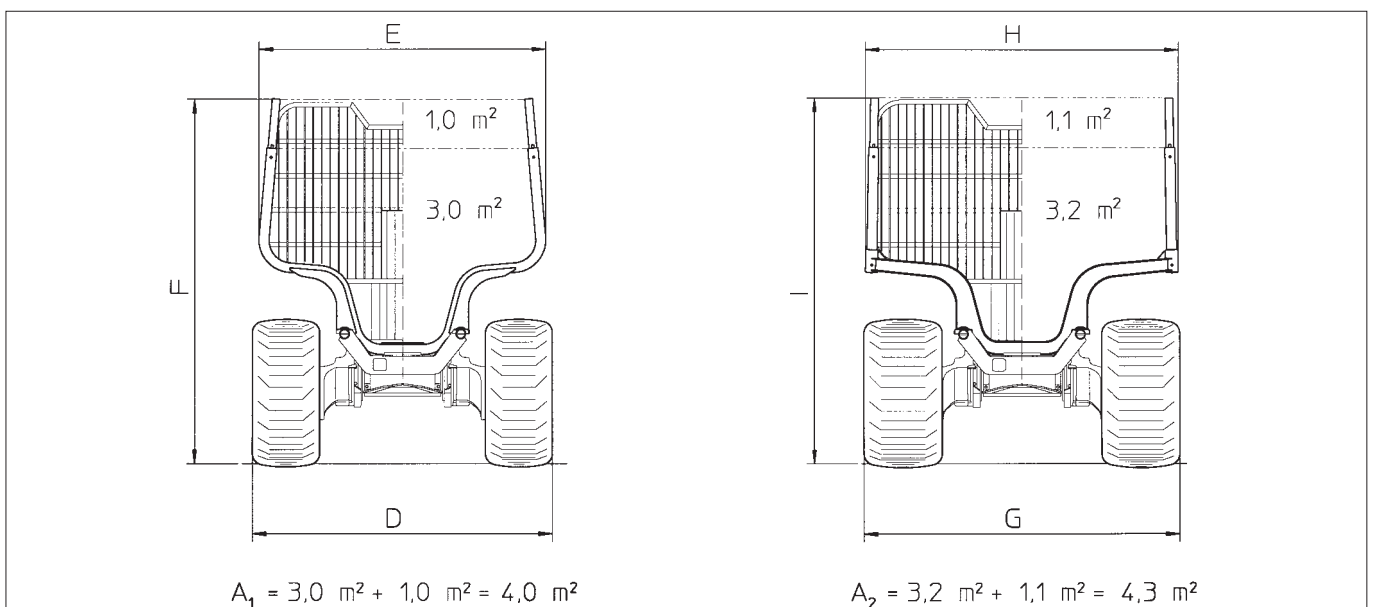
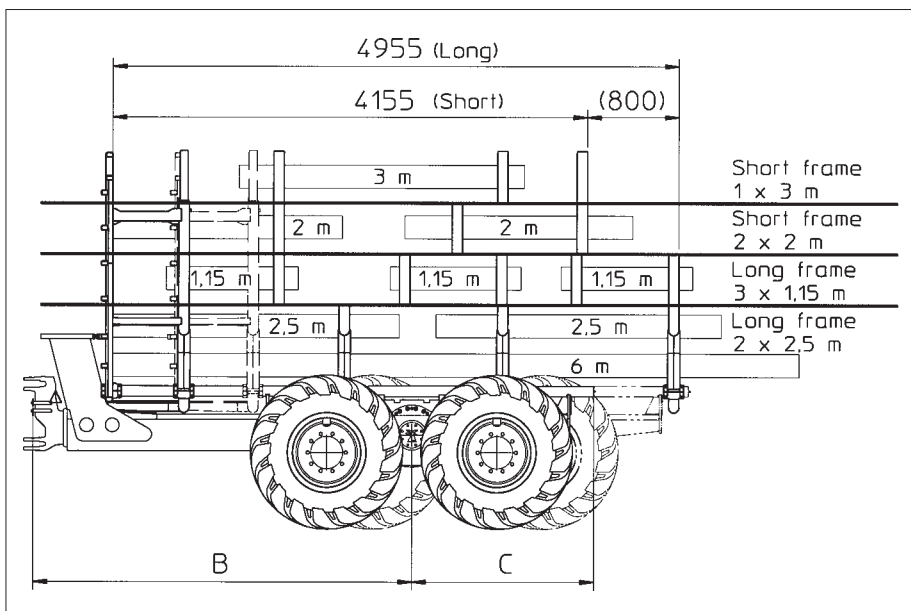
8W Tyres	Front		Rear		
	Empty	Loaded	Empty	Loaded 11 t	Loaded 11 t (tracks)
600	54	54	37	100	63
700	47	47	32	90	55

Load Area

Machine is available with two different frame lengths and two different cross sectional load areas. This will give a possibility to carry various log lengths: 1 x 3 to 6m, 2 x 2 to 2.5 m and 3 x 1.15m.

Frames	(mm)	B			C		
	Short	3300			1600		
	Long	3700			2000		
Headboard	movable (600 mm stroke) or fixed						
Tyres*		A₁ = 4.0 m²			A₂ = 4.3 m²		
	(mm)	D	E	F	G	H	I
	600	2680	2560	3245	NA	NA	NA
	700	2860	2560	3245	2860	2795	3260

*600 and 700 -tyres can be used with both frame lengths.

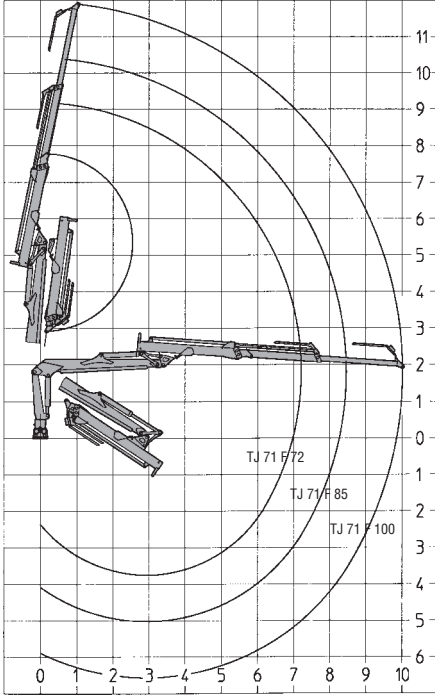




Crane TJ 71 F

General for crane

All types the slew torque is 24.4 kNm with the angle 380 degrees.

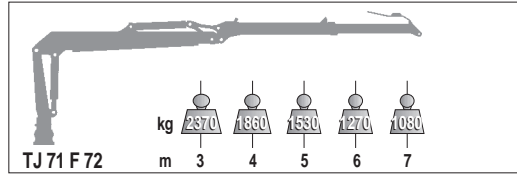


Rotator

The weight 58 kg, torque at 25 MPa 2200 Nm

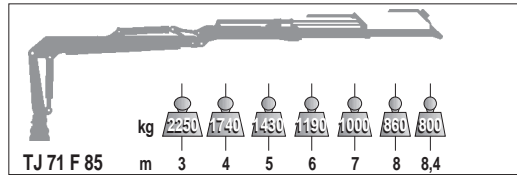
Link

Non damped, single damped or double damped are available



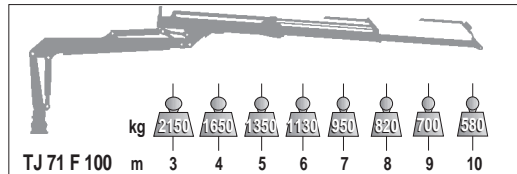
TJ 71 F 72

Reach 7200 mm
Length of extension 1400 mm
Lift moment gross 99 kNm
Lift moment net 75 kNm



TJ 71 F 85

Reach 8450 mm
Length of extension 2650 mm
Lift moment gross 99 kNm
Lift moment net 70 kNm



TJ 71 F 100

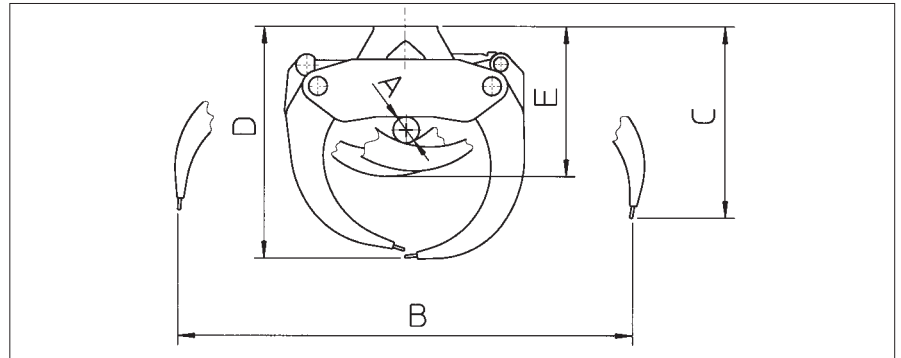
Reach 10010 mm
Length of extension 4200 mm
Lift moment gross 99 kNm
Lift moment net 66 kNm

Lifting capacities without link, rotator and grapple.

Grapple

Available log grapples

Type	Weight (kg)	Grip area (m ²)	Jaw width (mm)	A (mm)	B (mm)	C (mm)	D (mm)	E (mm)
Loglift FX 25	160	0,25	384	90	1490	745	860	535
Loglift FX 35	170	0,35	384	108	1575	765	920	570
Hultdins 260	150	0,26	384	90	1525	760	867	550
Hultdins 360	240	0,36	452	110	1870	800	962	627



All rights to alterations reserved.

Timberjack

Doing more

Timberjack Group · A Member of Rauma Corporation
www.timberjack.com